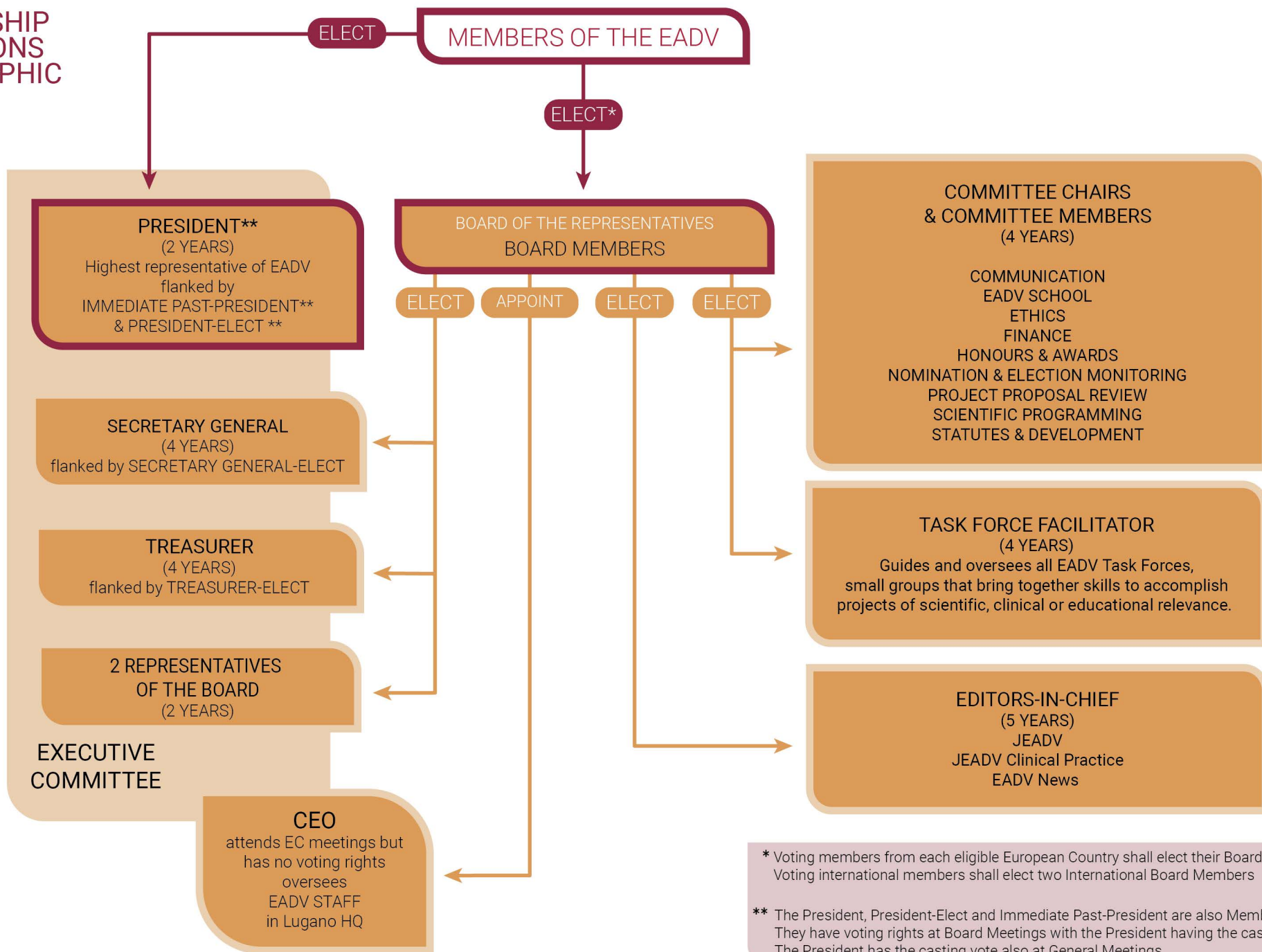


**LEADERSHIP
RELATIONS
INFOGRAPHIC**



* Voting members from each eligible European Country shall elect their Board Member(s). Voting international members shall elect two International Board Members

** The President, President-Elect and Immediate Past-President are also Members of the Board. They have voting rights at Board Meetings with the President having the casting vote. The President has the casting vote also at General Meetings.